



# Auto-fed Part Placers

Models AP-111, AP-120, AP-127

## Placing Head Features:

(100 Series Head Shown)

### Head Cover

(shown as cutaway)  
Cover slides upward for access to head.

**Sensing Assembly** Allows confirmation of piecepart placement.

**Proximity Switch** Initiates return strokes after proper placement of part.

**Placing Cylinder** Cushioned at both ends. Sensor shaft operates inside cylinder.

**Opening Cam Assembly** Part placing jaws are mechanically opened as the piecepart engages workpiece.

**Hardened Jaws** Custom machined to grip and align piecepart.

**Junction Box** Valve and terminal strip.

**Return Switch** Signals head in returned position.

**Pretravel Assembly** Controls piecepart confinement within the placement jaws.

**Intermediate Side Switch** Provides a signal for any auxiliary function such as timers, index table, transfer systems, etc.

**Optional Load Cell** Allows monitoring of pressing force.

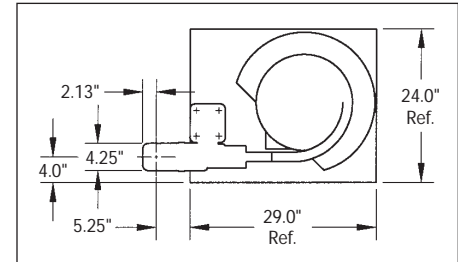


Basic AP-100 Series  
Placing Head

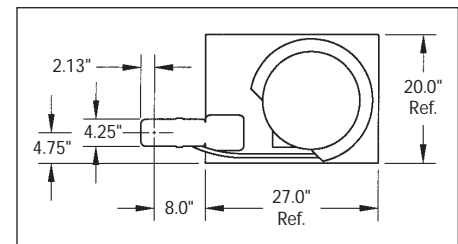


Typical parts for Models  
AP-111 and AP-127

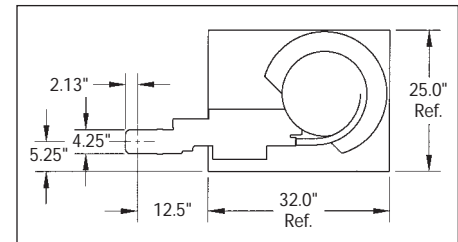
## AP-111 Dimensional Data



## AP-120 Dimensional Data



## AP-127 Dimensional Data



NOTE: Baseplate size varies with bowl size.  
15-inch bowl shown.

We reserve the right to make further  
technical changes without notice.

CAD drawings are available



## DIXON AUTOMATIC TOOL, INC. Products Group

2300 Twenty-Third Ave., Rockford, IL 61104 U.S.A  
Phone: 815 / 226-3000 • FAX: 815 / 226-8613

E-mail: [sales@dixonautomatic.com](mailto:sales@dixonautomatic.com) • [www.dixonautomatic.com](http://www.dixonautomatic.com)